



Wainui School

Small enough to nurture dreams, big enough to realise them

He iti noa hei whakapoipoi moemoeā,

He nui noa hei whakaea ai

Tui Team Term 2



Mrs. Simpson - Teacher Year 4 - Kowhai

Mr. Godfrey - Teacher Year 4 - Totara

Mrs. Sutton - Teacher Year 5 - Nikau | Team Leader

Mrs. Uhe - Teacher Year 5 - Kauri

Mr. Cochrane - Teacher Year 6 - Kahikatea | Assistant Principal

Mel McDermid - Learning Support Staff

If your child is unwell or unable to be at school

Email - office@wainui.school.nz

Call - 09 420 5127 (please leave a message)

Text - 027 525 1848

Tui Team - What's on top

Welcome to the Tui Team!

Welcome back to Term 2! Term One went by quickly, full of activity and progress. Thank you for your consistent support-whether through contributions to the Bake Sale and Sausage Sizzle or helping ensure students are prepared each day for Garden to Table. It has been a pleasure getting to know your children and seeing them settle into their routines and make strong learning gains in a short time frame.

Looking ahead to Term 2, there are several key events coming up:

- Year 5 & 6: Camp at Shakespear Regional Park
- Year 4: An EOTC programme, including a trip to Ninja World in Matakana
- Bikeathon

The Tui Team is a collaborative partnership of five classes. We have two year 4 classes, two year five classes and one year six class, integrated within the Phase two framework of the New Zealand Curriculum. We are focused on developing resilient and independent learners. We appreciate the role you play in supporting the Tui Team and we look forward to building on this positive start to 2026.



Tui Team Dates for Term 2

Mon 27 April- ANZAC Day commemorated (school closed)
Tue 28 April & Wed 13 May - Kia Kaha Programme
Fri 1 May - Takehe Team Assembly (all welcome)
Tue 5 May- Parent Helper Meeting for parents attended Year 5/6 camp
Thu 7 May - School Photos
Fri 15 May - Pink T Shirt Day (Details TBC)
Wed 20 May - Fri 22 May Year 5/6 camp
Thu 21 May - Year 4 trip to Ninja world in Matakana
Fri 22 May - Pukeko Team Assembly (all welcome)
Fri 29 May: Teacher only day (school closed)
Mon 1 June - Kings Birthday (school closed)
Tue 2 June - Fri 12 June (Life Education Van is at school)
Thursday 11 June - Ripa Zone Day (year 5/6)
Friday 12 June - Tui Team Assembly (all welcome)
Friday 19th June - Bikeathon (new date)
Thu 2 July - Matariki Breakfast
Fri 3 July - Last day of Term 2

***Please check further sports dates on the last page of this newsletter*



Small enough to nurture dreams, big enough to realise them
He iti noa hei whakapoipoi moemoeā, He nui noa hei whakaea ai

Learning Information

Structured Literacy



Reading – Panui

We use the Better Start Literacy Approach (BSLA). This is a research-based structured literacy programme from the University of Canterbury. BSLA seamlessly weaves reading, writing, and spelling into one cohesive experience. Your child will continue to progress through various taumata (levels), ensuring their knowledge builds consistently year after year. By dedicating an hour each day to reading, learners strengthen key skills such as comprehension, critical thinking and vocabulary. These key skills will equip our students to comprehend, analyse, and interpret texts at a deeper level.

Taumata 10 - Year 4	Taumata 13 - Year 5	Taumata 16 - Year 6
Explicit teaching on Non-Fiction text structure:		
Apply decoding skills to Science or Social Science articles.	Take information from two different parts of a text (or two different texts) to form a complete answer.	Evaluate evidence by determining if a writer's claims are backed by solid facts or just persuasive language.
Learn high-frequency academic words that appear across various subjects (e.g., <i>analyse, contrast, establish</i>).	Notice how an author's choice of adjectives can influence a reader's opinion (e.g., describing an event as "a challenge" vs. "a disaster").	Synthesise Information by comparing two different articles on the same topic and identifying where they agree or conflict.
Introduction to Greek/Latin Roots: Simple roots like <i>tele, photo, or graph</i> .	Learn how to navigate academic layouts—captions, sidebars, and footnotes in <i>School Journals</i> .	Learn how to navigate academic layouts—captions, sidebars, and footnotes in <i>School Journals</i> .

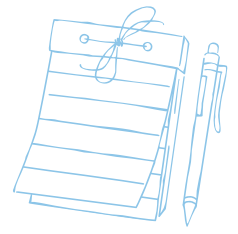


Teacher Tip!

Did you know? Students who dive into chapter books at home for pleasure naturally become stronger spellers and more creative writers! When children read for fun, they subconsciously soak up sophisticated sentence structures and tricky spelling patterns, giving them a huge head start in the classroom.

Learning Information

Structured Literacy



Writing - Tuhituhi

We are continuing our learning using the Writer's Toolbox platform for a third year, to further strengthen our students' writing skills. This structured literacy programme supports learners as they progress from constructing simple sentences to developing well-organised paragraphs.

Key areas of focus this term include:

- Vocabulary development: Building a broader and more precise vocabulary to improve clarity and detail in writing.
- Range of texts: Engaging with a variety of fiction and non-fiction material.
- Multimodal learning: Working across written books, the online platform, collaborative group sessions, and individual writing tasks.

This balanced approach, supported by a daily hour of writing, is designed to meet the needs of all learners while developing confidence, creativity, and independence in writing.

Students will be explicitly taught the following sentence styles this term:

Year 4 - 'power sentence' start e.g. Gasping, stumbling, and tripping, the explorer finally reached the summit of the mountain.

Year 5 - 'Explore the subject (Compound & Comma rule) e.g. The old lighthouse, which had stood for over a century, guided the ships safely to shore.

Year 6 - 'Em-Dash sentence, e.g. The relay team stood shivering on the concrete edge - they were only seconds away from the gold

Writing Genre Focus Year 4/5/6	
Information Reports	Figurative Language
<ul style="list-style-type: none">• Texts to inform include reports, newspaper articles, biographies, and explanations.• Informative texts introduce a topic and organise ideas clearly, grouping related information into paragraphs.• Linking words and phrases connect ideas, helping the writing flow smoothly.• Precise and topic-related vocabulary makes writing clearer and more informative, especially when explaining facts and ideas.• Informative texts end with a concluding statement, which wraps up the topic and reinforces the main idea.• Informative texts often include visual features (e.g. illustrations, diagrams, photos, maps, and graphs).	<ul style="list-style-type: none">• Figurative language is used to purposefully create vivid images and effects that engage the reader.• A simile is a comparison between two things using 'like' or 'as'.• A metaphor is a direct comparison that says one thing is another.• Imagery is descriptive language that helps the reader imagine what something looks, sounds, feels, smells, or tastes like.• Personification gives human actions or feelings to non-human things.• Alliteration is the repetition of the same sound at the beginning of words.



Teacher Tip!

Unlock the Writer's Toolbox! Did you know your child can access Writer's Toolbox from home? It's a fantastic way to sharpen their "sentence power" outside of school. It's great for building writing stamina, experimenting with new sentence styles, and getting instant feedback on their creative drafts. Even 15 minutes of "free writing" on the platform helps turn them into more fluent, confident authors!

Learning Information

Mathematics - Pāngarau



The Tui Team will continue to engage in a mathematics programme that emphasises hands-on learning to support conceptual understanding and develop strategic thinking.

Aligned with the refreshed New Zealand Curriculum, the programme focuses on key areas:

- Place value: Developing understanding of thousands, hundreds, tens, and ones
- Core operations: Building accuracy and fluency in addition, subtraction, and multiplication

Students participate in a balanced approach that includes both independent practice and guided instruction. We use structured PR1ME Mathematics resources alongside rich, real-world problem-solving tasks. This will support the application of knowledge in meaningful contexts.

A dedicated hour of mathematics each day ensures consistent practice.

Year 4	Year 5	Year 6
We are learning to use place value (thousands, hundreds, tens, and ones) to solve subtraction problems, including those that require "regrouping" or "borrowing."	We are learning to multiply and divide multi-digit numbers by identifying factors and multiples, and by using the area model to break larger numbers into manageable parts.	We are learning to understand percentages as "parts per hundred" and apply this to real-life financial contexts, such as calculating discounts, GST, and simple interest
We are learning to use our skip-counting and array knowledge to solve multiplication and division problems, exploring the connection between these two operations.	We are learning to choose the most efficient mental or written strategy for a problem—such as doubling and halving, compensating, or using place value—and explain why that method works best.	We are learning to follow the correct mathematical "rules of the road" (Order of Operations) to solve complex equations that involve multiple steps, including brackets and exponents.
We are learning to choose the appropriate tools and units to accurately measure how long an object is or how much an object weighs.	We are learning to deconstruct multi-step word problems by identifying the "core" operation and using a variety of models (like bar models) to visualize and solve the challenge.	We are learning to recognize and work with rational numbers—including positive and negative integers, fractions, and decimals—by comparing their values and placing them accurately on a number line.
We are learning to estimate and measure lengths using standard metric units and understand how they relate to one another.	We are learning to find equivalent fractions, compare and order fractions with different denominators, and solve problems involving adding and subtracting fractions with the same denominator.	



Teacher Tip!

Unlock the Power of Practice! Did you know your child can access Maths Pro from home? This is a fantastic way for them to reinforce the concepts we are covering in class. Just 15–20 minutes of consistent practice a few times a week can significantly boost their confidence and help them master new strategies at their own pace. It's a fun, interactive way to turn "homework" into a "power-up" for their learning!

Learning Information

Digital Technology

Building on our Digital Citizenship foundation from Term 1, our Year 4, 5, and 6 students are moving from being digital users to digital creators, fully aligned with the refreshed New Zealand Technology Curriculum.

Term 2 Digital Focus

- Typing Mastery: Developing "touch typing" skills so students can fluently get their creative ideas from their heads onto the screen.
- Computational Thinking: Learning to solve problems logically and understand the "why" behind the apps they use.
- Digital Design: Using tools to create and present their own unique projects across all subjects.



Garden to Table and Technology

Our Garden to Table and Technology programme is a timetabled part of learning for Year 4–6 students in the Tui Team. Each week, students engage in a variety of hands-on experiences in the garden and kitchen, alongside a broad technology curriculum that includes hard technology, soft technology, art and design, and digital technology.

Through this integrated approach, students develop key skills such as investigating, planning, creating, and evaluating outcomes. They strengthen their ability to follow processes, solve problems, and work collaboratively, while also building confidence and independence. The programme fosters creative thinking, supports safe and responsible practices, and encourages students to manage resources thoughtfully and consider the impact of their decisions on people and the environment.

Year 4:

- Our Year 4 students are set to become digital architects as they delve into the exciting world of coding with KaiBots, using both physical tiles and virtual environments to master the logic of sequences and problem-solving.

Year 5/6:

- Construction & Woodwork: Students will master fundamental construction skills and learn about tool safety. Students will follow the design thinking process to create a planter box, that will be used by the Tui team. This will be purposeful as we move into term 3, when we inquire about growth cycles and healthy eating.
- Vermi-composting (Worm Farming): This is sustainability in action. Students manage our "worm hotels," gaining a technical understanding of nutrient cycles and waste reduction to produce the "liquid gold" that fuels our soil. We will be exploring hydroponics vs vermi-composting in a compare/contrast science experiment
- Visual Arts: Students will complete two visual art pieces during their Garden to Table rotations. One will be an individual art piece and the other a collaborative art piece that showcases the Garden to Table process here at Wainui School!

The Arts

In our Art sessions, students explore mixed media - including drawing, painting, collage, and construction - to sharpen their observation and technical skills. We encourage our creators to take risks, share unique perspectives, and reflect on their artistic journey. By experimenting with different materials and techniques, students build the confidence to tell their own stories and understand how art communicates meaning to the world.

Te Ao Māori

Whaea LeeAnne Wade will continue supporting us with our Kapa Haka group and Te Ao Māori programme, a vital part of our school's culture. The programme supports students to develop confidence, leadership skills, and a deeper connection to Māori culture. We see tremendous growth in students who are active participants and leaders in this programme. Te Ao Māori is an important part of our nationwide curriculum.

Learning Information



Physical Education (PE), Education outside the classroom (EOTC) and Health/Wellbeing

Tui Team Sports: Term 2 Overview

- We are looking forward to the Bikeathon at the end of the term. Please ensure students wear closed-toed shoes for their class bike sessions when our track reopens.
- On 11 May, our Triathlon team of 20 will compete; participants should continue training at home alongside school sessions.
- The Year 5/6 Football Zone Day at Metro Park is open to all, with trials determining competitive and non-competitive teams.
- Finally, the Rippa Rugby Festival in June offers a friendly, competitive experience for all interested Year 4–6 students. This is a fun festival experience, and while competitive is a great opportunity to put the in school skills sessions into play.

This term, our Year 4–6 students are focusing on large ball skills that include Rippa Rugby and Football. Our PE program is designed to help students refine their motor skills and develop tactical awareness in team environments, ensuring they are well-prepared for our upcoming interschool events.

Parent & Caregiver Support

To make these events possible, we require parent helpers for transport and team leading. Please contact us if you can assist. Starting this term, all permission slips are located on your child's **Kindo** profile. Each form contains a link to specific event details. If you have any additional questions, please feel free to email the Tui Team. We look forward to a high-energy term of sport!

<i>Event</i>	<i>Date</i>	<i>Location</i>	<i>Skills, Strategy & Focus</i>
Bikeathon	Jun 19, 2026	Wainui School	Bike handling, safety & peer support.
Kaipara Triathlon	May 11, 2026	Parakai School & Kaipātiki Hot Springs	Endurance, transitions & school pride.
HBC Football Zones	May 14, 2026	Metro Park, Millwater	Accurate striking & collaborative plays.
Rippa Rugby	Jun 11, 2026	Silverdale Rugby Club	Passing, defensive lines & team strategy.

EOTC

Year 4:

While our Year 5 and 6 students are away at camp, our Year 4 students will take part in a special two-day EOTC (Education Outside the Classroom) experience. As part of this, they will enjoy a day trip to Action Ninja World on Thursday 21st May. A letter and permission slip has been sent home with all of the details.

Year 5/6:

Our Year 5 and 6 school camp is scheduled for Term 2. Camp is a wonderful opportunity for students to immerse themselves in the outdoors, participate in activities that promote teamwork and independence, and develop a deeper appreciation for the environment. The Student fee of \$290 and parent helper fee over \$190 has been added to you child's Kindo account. Please do not hesitate to contact us, if needing support with these payments. The following documents must be completed online, for your child to attend camp.

- EOTC Consent information + Agreement
- Aquatic Ability information
- Student health profile
- Student contract (This will be given in class for students to read and sign).

Finally, The Camp parent helper meeting is set for **Tuesday 5th May at 5:00 pm**. We want to acknowledge and thank all of our parent volunteers for supporting the Tui Team camp this year.



Learning Information



Inquiry - Pakirehua

Ngā Hononga Ora - "The Living Connections"

Ngā refers to "the many," Hononga represents the bonds, links, and relationships that connect us to our history, our environment, and one another, and Ora means to be alive, healthy, and flourishing. This theme celebrates our role as kaitiaki, recognising that our strength and wellbeing come from the living connections we share with the world around us and the people within our school community.

Kia Kaha Programme

Our Kia Kaha Programme begins this term with Constable Bryan and Constable John. This is a really valuable programme that supports our tamariki to build strong relationships, understand bullying, and grow confidence in keeping themselves and others safe. Please see the Wainui School Term 2, Week 1 newsletter for more details.

Life Education

Wainui School is pleased to welcome Harold the Giraffe and the Life Education Term to our school this term. The Life Education programme is a New Zealand-based, non-profit health initiative that educates children on wellbeing through interactive, in-school lessons.



Final Word

We look forward to an excellent Term 2! Our expectations continue to build upon the "House of Wainui" through the principles of E Tū Tāngata, Positive Behaviour for Learning (PB4L), and our School Values (5 R's). This foundation is further strengthened by our 5-Step Behaviour Plan (see attached).

Our partnership with whānau and caregivers is paramount to success. Positive, open communication ensures your child remains happy and connected within our team.

We truly appreciate the "mountains of support" we receive from our Tui Team families. From getting your child to school on time and staying on top of emails, to supporting us on school camps and reinforcing positive behaviour at home—thank you. Most of all, thank you for allowing us the privilege of being part of your child's life during these important middle school years.

We look forward to every day, and we hope your child does too!



Warmly

*Danielle Simpson, Fiona Sutton, James Godfrey,
Tracey Uhe, Mel McE and Luke Cochrane,*



**Small enough to nurture dreams, big enough to realise them
He iti noa hei whakapoipoi moemoeā, He nui noa hei whakaea ai**